

MONTHLY MEMBERSHIP PROGRESS REPORT

District 9 NC

Results as of: 5/31/2026

GMT:

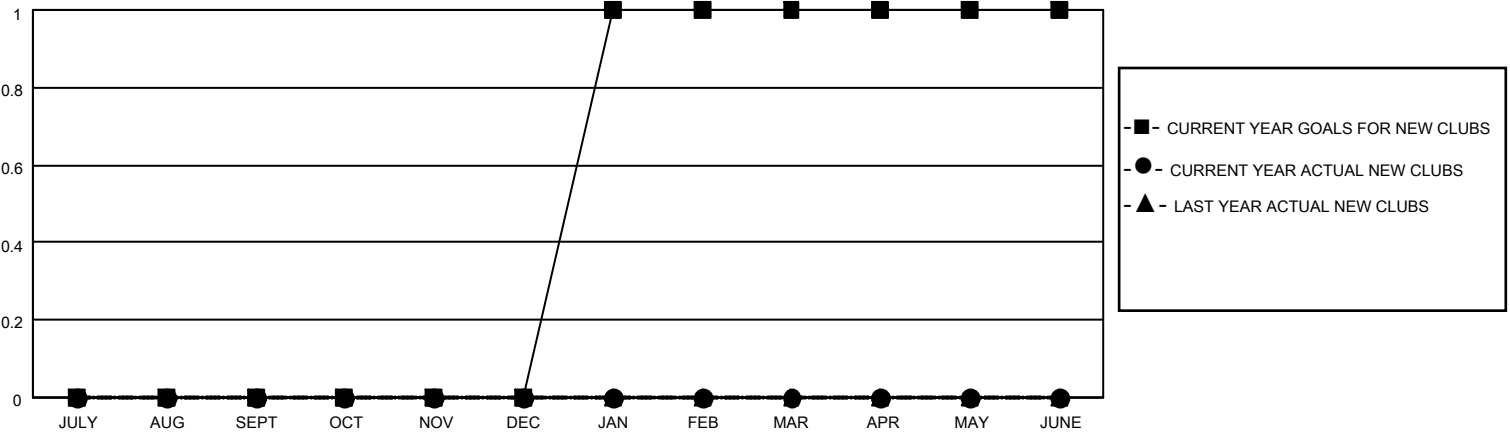
LOCATION IOWA

GMT CA

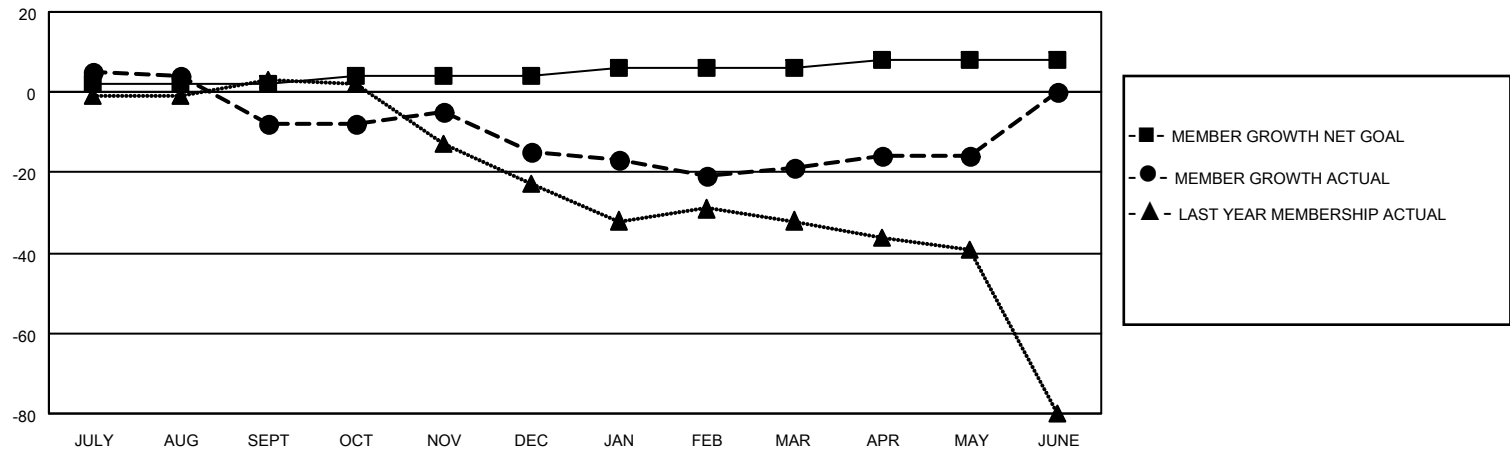
Clubs			
RESULTS FOR 2025-2026			
QUARTER	NEW CLUB GOAL	NEW CLUBS	DROPPED CLUBS
JULY/AUG/SEPT	0	0	0
OCT/NOV/DEC	0	0	0
JAN/FEB/MAR	1	0	0
APR/MAY/JUNE	0	0	0

Members			
RESULTS FOR 2025-2026			
QUARTER	MEMBER GROWTH NET GOAL	MEMBER GROWTH ACTUAL	DROPPED MEMBERS ACTUAL (including transfers)
JULY/AUG/SEPT	2	37	25
OCT/NOV/DEC	2	23	27
JAN/FEB/MAR	2	10	11
APR/MAY/JUNE	2	15	12

GOALS AND ACTUAL NEW CLUBS CUMULATIVE



GOALS AND ACTUAL MEMBERS CUMULATIVE



DROPPED CLUBS: 0	18 CLUBS OF 32 ADDED 1 OR MORE NEW MEMBERS	GENDER DISTRIBUTION MALE 526 (70.23%) FEMALE 223 (29.77%)
DROPPED MEMBERS DECEASED 12 CLUB CANCELLED 0 OTHER 63 TOTAL 75	CLICK HERE FOR CUMULATIVE MEMBERSHIP DATA	TOTAL FAMILY UNIT MEMBERS 119 FAMILY MEMBERS PAYING HALF DUES 60